

Aviation Refuelling

ATCOMEX
000 I ISO 9001



SEMI-TRAILER 85.000L



Atcomex Company nv

Nijverheidslaan 6
B-8560 Gullegem
Belgium

Tel. 32 56 43 99 20

Fax. 32 56 40 00 56

Email: atc.gullegem@atcomex.be

BTW/TVA BE 0425 920 763

RPR/RPM KORTRIJK

Atrefco nv Atcomex Hamme

Industriepark Zwaarveld 11

B-9220 Hamme

Belgium

Tel. 32 52 49 92 90

Fax. 32 52 47 84 32

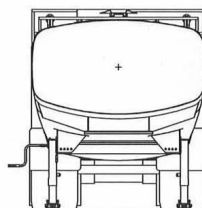
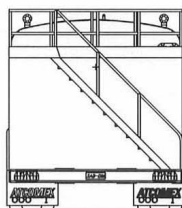
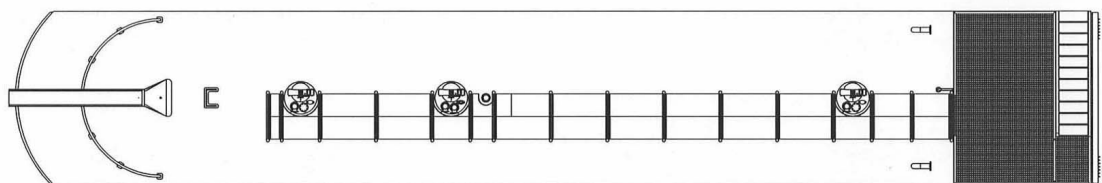
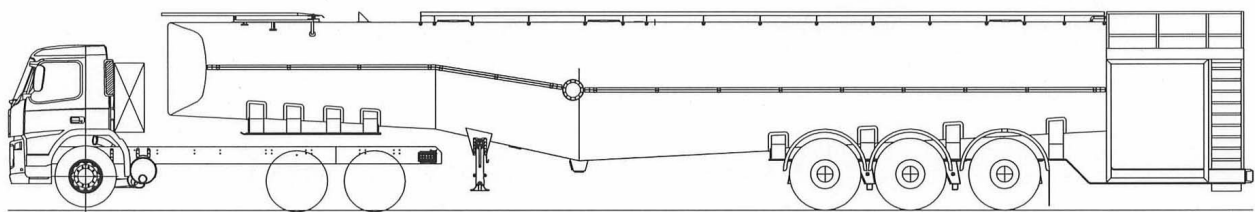
Email: info.hamme@atcomex.be

BTW/TVA BE 0433 655 920

RPR/RPM DENDERMONDE

www.atcomex.be

08 - 2007



TECHNICAL SPECIFICATIONS

- Tractor unit Mercedes Actros 3335 with hydraulic drive (other tractor makes available).
- Aluminium Semi-Trailer tank 85000 litres capacity with two rigid and one following axle.
- Fixed or Hydraulic operated lifting platform with two deck hoses and underwing nozzle. Flow rate 3000 lpm.
- One or two hose reels with underwing nozzle. Flow rate 1000 lpm.
- Primary and secondary overfill protection.
- Single HEPCV and inline pressure control valve.
- Defuelling possibility.
- Loading rate 2700 lpm.
- External suction.
- Hydraulic driven fuel pump.

SAFETY FEATURES

- Deadman control with timer function. With cables or wireless.
- Interlock system.
- Pneumatic operated handrails on top of tank or bi-line system.
- Wired to ADR standard.
- Build to the latest CEN specifications and conform to the latest JIG into plane specifications.