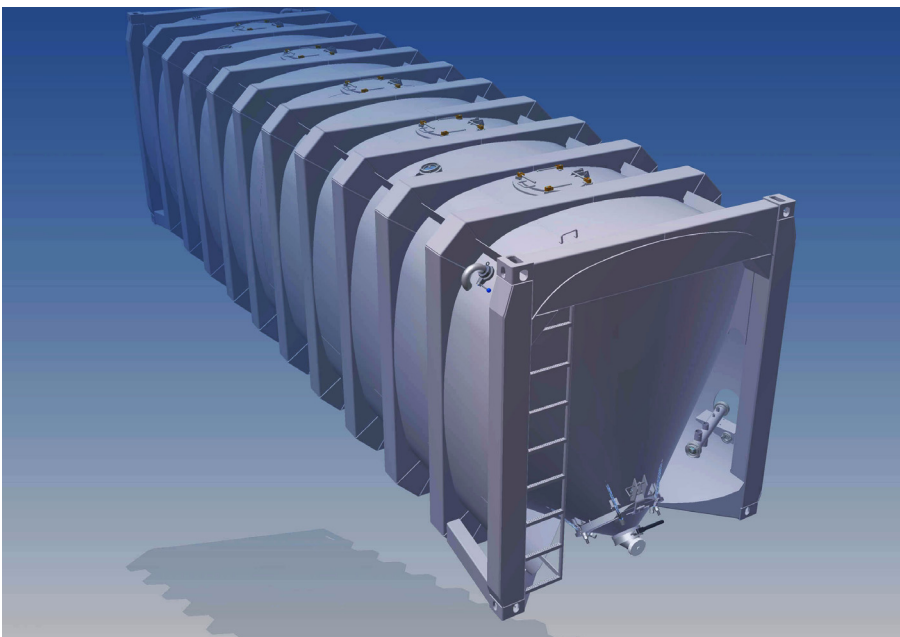
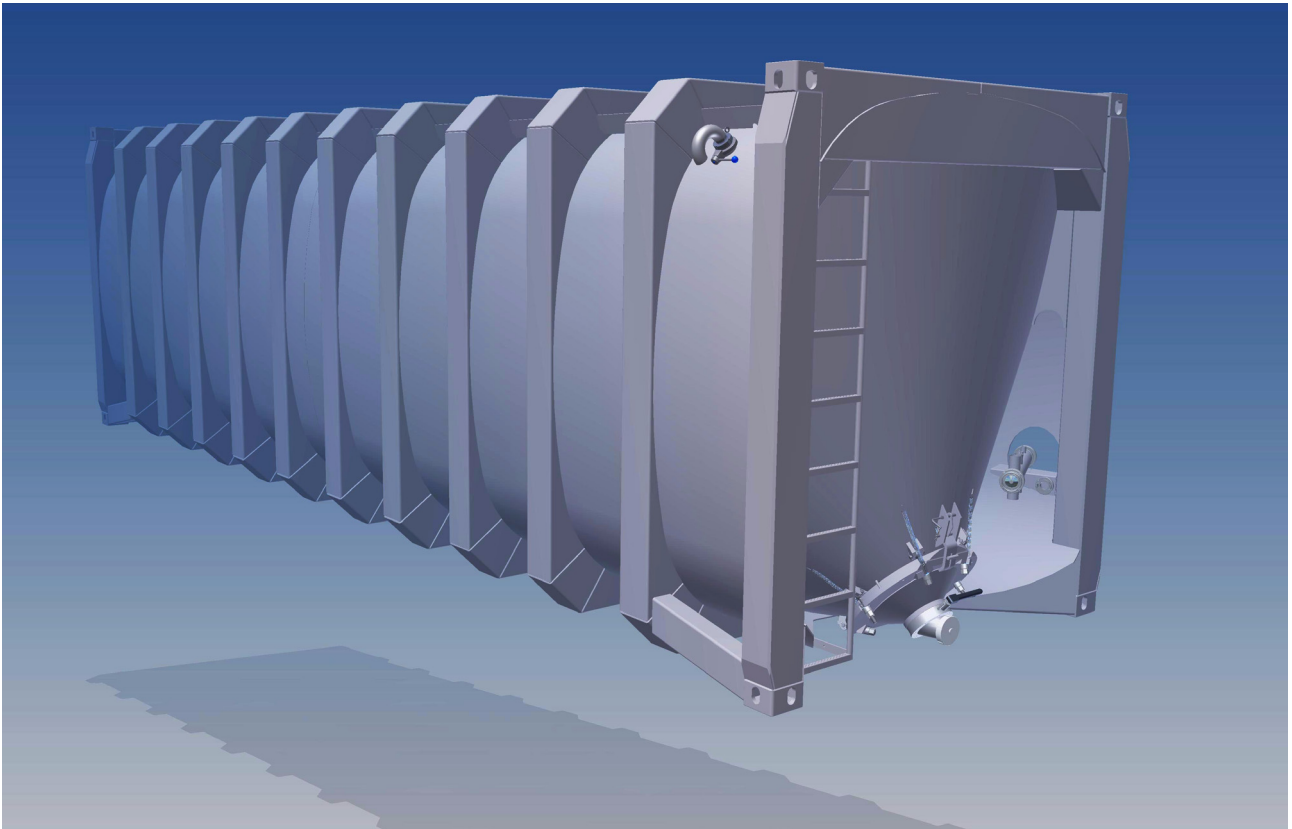


**Transport de vrac**  
**Bulk transport**

**ATCOMEX** ISO 9001  
OOO I

## **ECO PRESSURE BOX CONTAINER 51 M<sup>3</sup>**



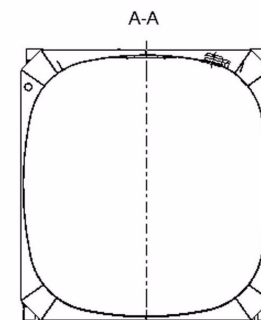
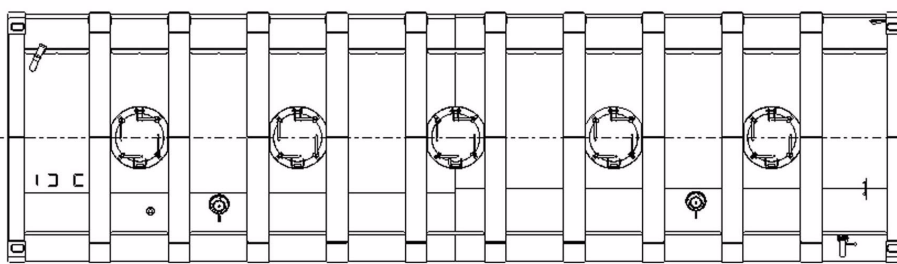
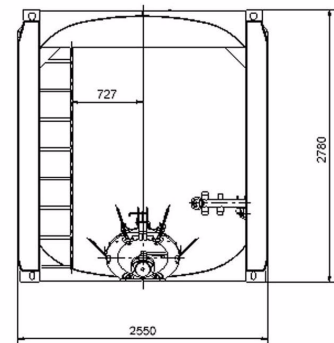
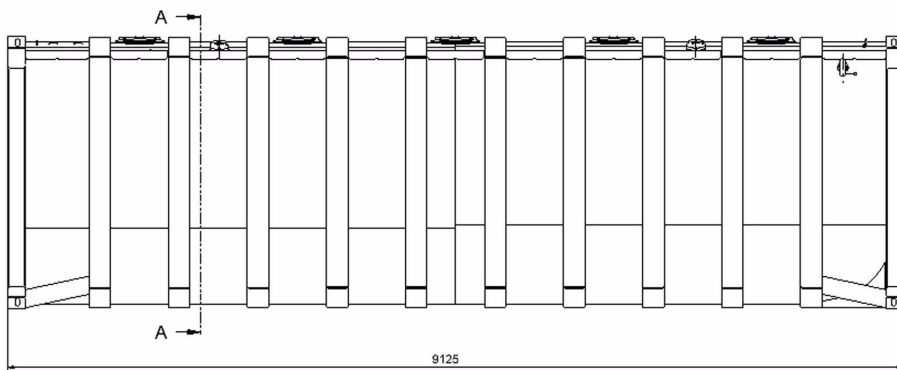
**Atcomex Company nv**

Nijverheidslaan 6  
B-8560 Gullegem  
Belgium  
Tel. 32 56 43 99 20  
Fax. 32 56 40 00 56  
Email: [gullegem@atcomex.be](mailto:gullegem@atcomex.be)  
BTW/TVA BE 0425 920 763  
RPR/RPM KORTRIJK

**Atrefco nv Atcomex Hamme**

Industriepark Zwaarveld 11  
B-9220 Hamme  
Belgium  
Tel. 32 52 49 92 90  
Fax. 32 52 47 84 32  
Email: [hamme@atcomex.be](mailto:hamme@atcomex.be)  
BTW/TVA BE 0433 655 920  
RPR/RPM DENDERMONDE

[www.atcomex.be](http://www.atcomex.be)



## CARACTÉRISTIQUES TECHNIQUES

- Type: ..... Conteneur 30'
- Contenu (eau): ..... 51 m<sup>3</sup>
- Matériau: ..... ALU
- Tare: ..... 3010 kg
- Longueur: ..... 9125 mm
- Hauteur: ..... 2780 mm
- Largeur: ..... 2550 mm
- Nombre de couvercles de trou d'homme: ... 5
- Nombre de compartiments: ..... 1
- Pression de service: ..... 1,5 bar
- Homologation CSC et CE
- Stockage en hauteur: 4 conteneurs
- Profil 30

## TECHNICAL SPECIFICATIONS

- Type: ..... Container 30'
- Contents (water): ..... 51 m<sup>3</sup>
- Material: ..... ALU
- Tare weight: ..... 3010 kg
- Length: ..... 9125 mm
- Height: ..... 2780 mm
- Width: ..... 2500 mm
- Number of manhole covers: ..... 5
- Number of compartments: ..... 1
- Working pressure: ..... 1,5 bar
- CSC and CE approved
- Stacking height: 4 containers
- Profile 30